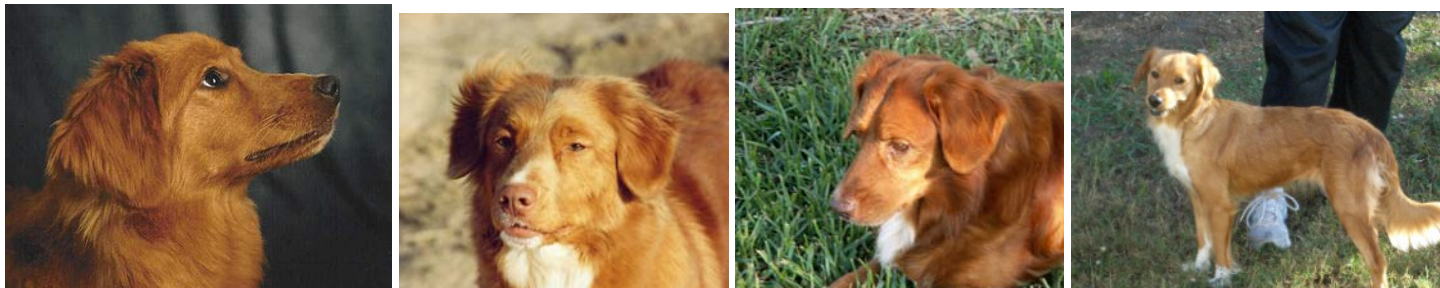


Rescue Primer Photos

Copyright Laura G White 2008

The following are examples of Tollers. Both variations that one normally sees and some of the variations that are uncommon but do exist. Many of the photos are of actual Rescues. A great big Thank You to all that have contributed with this part of the Primer.

Normal Variations in the Toller Breed:



Group Photos Showing Common Variations in the Breed



Three colors: Medium Red, Dark Red and Buff



Normal Sized Male and Huge Female



Color and Marking Variations



Variations of Color and Markings



The LH Toller is a RESCUE!



Variation of color, head type, ears and markings



Light and medium color comparison



Medium and Buff Color Comparison



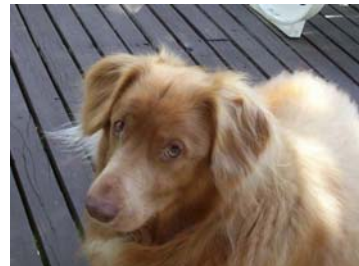
Darker mother and Buff puppies



Color and Marking Variations



Dark Red w/no shading or white



Buff



Mismatch





Very light red



Sable



Ticking



Dark Red with little White



Med Red, no shading, no white



Dark Red shading, and high tail set



Light Red, no white



Tail Variations



Gay Tail

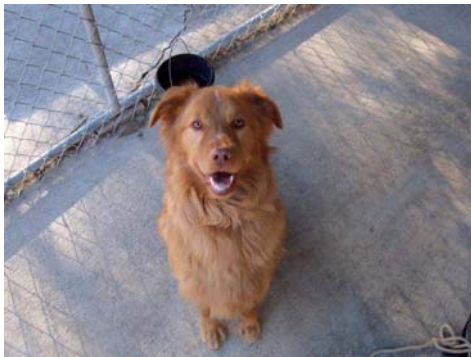


Cut off or damaged tail



Gay Tail

Ear Variations:



Three examples of "Wonkie" ears



Long ear hair and ticking



Ears that can stand up (sometimes)



Half up ears ticking on blaze,
normal fading of "black" nose



More ear variations



Puppies. We rarely find puppies, but here are a few young Tollers



THANK YOU ALL FOR SUPPORTING TOLLER RESCUE!